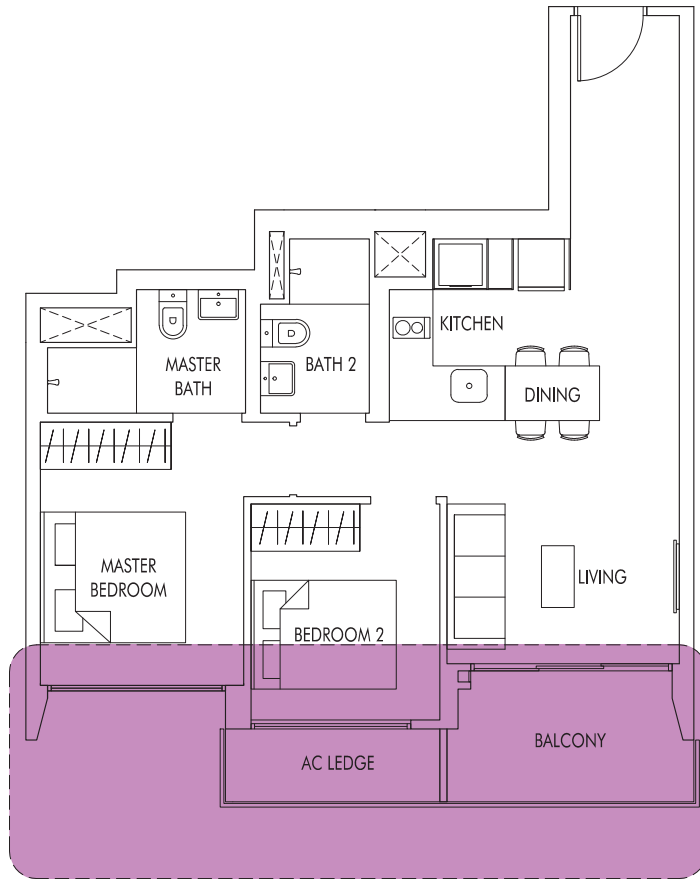


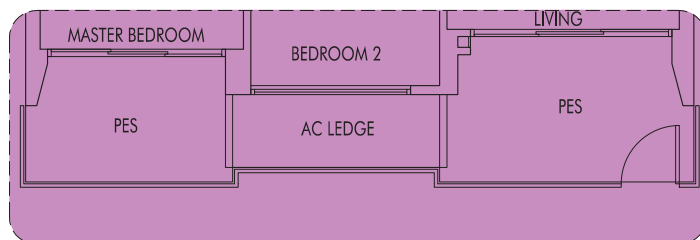
2 Bedroom



TYPE B3

68 sq m | 732 sq ft

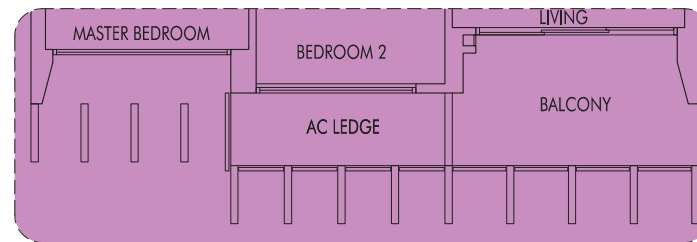
#02-03 to #23-03
 #02-08 to #23-08
 #02-13 to #23-13
 #02-36 to #25-36 (mirror)



TYPE B3P

74 sq m | 797 sq ft
 (including PES of 12 sq m/129 sq ft)

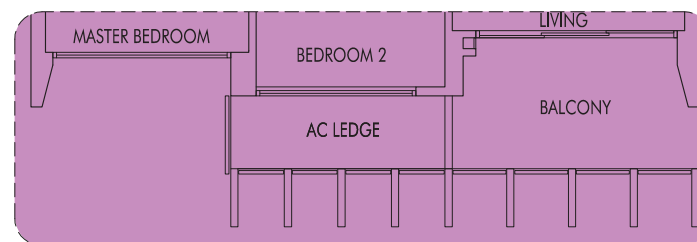
#01-03
 #01-08
 #01-13



TYPE B3a

68 sq m | 732 sq ft
 WITH VERTICAL LOUVERS & FINES
 AS PER DSTA REQUIREMENT

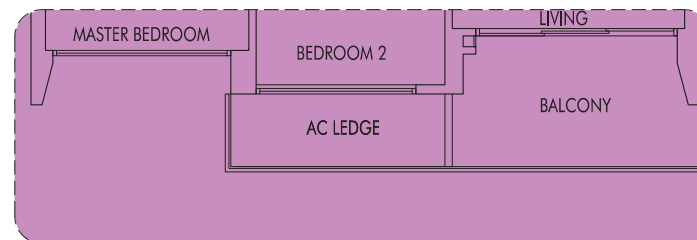
#24-03



TYPE B3b

68 sq m | 732 sq ft
 WITH VERTICAL LOUVERS & FINES
 AS PER DSTA REQUIREMENT

#24-08
 #25-08



TYPE B3c

68 sq m | 732 sq ft
 WITH VERTICAL LOUVERS
 AS PER DSTA REQUIREMENT

#24-13
 #25-13

